

UPIC Series “System Operating Instructions” Supplemental Instructions To Windows® 7 Users

Introduction

Users of Windows® 7 are requested to follow these Supplemental Instructions to install the software and pair the digital pen and computer.

- Microsoft, Windows® 7, and Internet Explorer are registered trademarks or trademarks in the United States and other countries of the Microsoft Corporation of the United States.
- Bluetooth and the Bluetooth logo are registered trademarks of Bluetooth SIG, Inc.

• Operating environment

Item	Description
Operating system	Windows 7 (32-bit/64-bit)
CPU	1 GHz or greater processor
Memory	1 GB or greater (32-bit) / 2 GB or greater (64-bit)
Hard disk	200 MB or more free space
Internet Explorer	Ver. 6.0 or later

* A Bluetooth stack compatible with Windows® 7 is required.

* Providing the above operating environment does not guarantee that all operations will work.

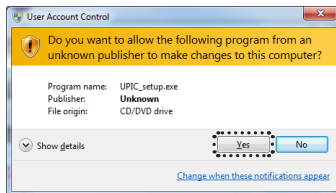
NOTE

When using a computer without a built-in Bluetooth function, use a PLUS-recommended Bluetooth USB adaptor and install its software compatible with Windows® 7.

* If the software is not supported on Windows® 7, download the required version from the web site of the Bluetooth USB adapter's manufacturer.

• Note when installing UPIC Utility and Touch & Draw

When the “User Account Control” screen appears while installing the software, select [Yes], then proceed to the “Installing UPIC Utility and UPIC Touch&Draw” procedure in the System Operating Instructions.



• About the UPIC Utility icon display ()

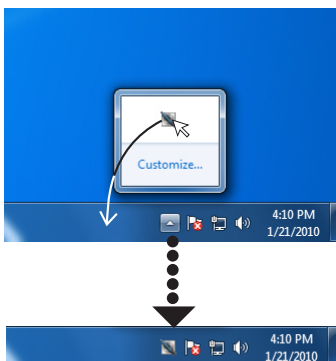
When the UPIC Utility icon is set to [Display in task tray], the  icon may be displayed.

Use the procedure below to display the  icon in the task tray.

1 Click the icon.

A window appears.

2 Drag the icon to the task tray.



Pairing the digital pen and computer

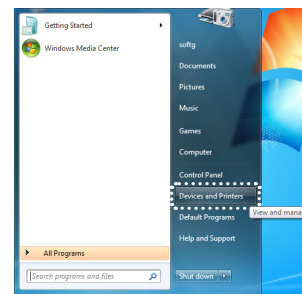
• Example of registration using a Toshiba Bluetooth stack on Windows® 7

Preparations:

1. Turn on the Bluetooth function (the computer's built-in function or a commercially available USB adapter).
NOTE When using a Bluetooth USB adapter, be sure to install software compatible with Windows® 7.
2. **Take the digital pen's cap off. The power turns on and the indicator lights.**

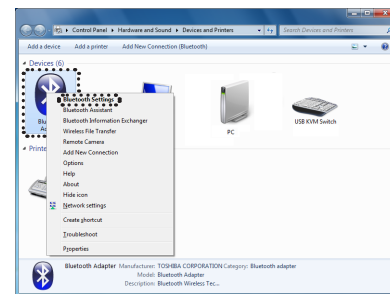
1 Click [Start] → [Devices and Printers].

The “Devices and Printers” window appears.



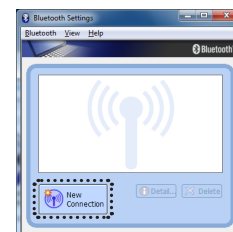
2 Right-click “Bluetooth Adapter”, then select [Bluetooth Settings] from the pop-up menu.

The “Bluetooth Settings” window appears.



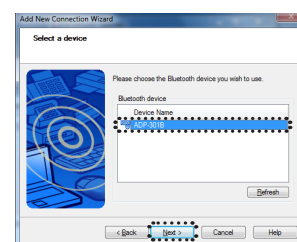
3 Click [New Connection].

The “Select a device” window appears.



4 Click “ADP-301B”, then click the [Next >] button.

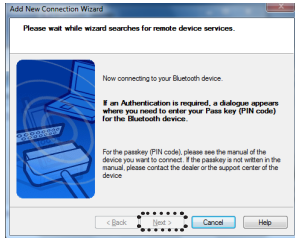
- If ADP-301B cannot be found, click [Refresh].



The “Please wait while wizard searches for remote device services.” window appears.

Continued on back

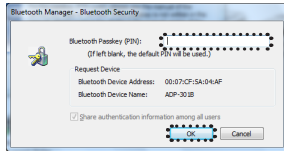
Click the [Next >] button



5 Input "0000" as the passkey, then click the [OK] button.

The passkey input screen appears.

- If "Failed to detect service" appears, put the cap on the digital pen, then take the cap back off, select "ADP-301B" again, then click [Next >].



The "ADP-301B" digital pen is registered and the next screen appears.

6 Click the [X] (close) button.



7 Put the cap on the digital pen to turn it off once.

- * To register multiple digital pens, repeat the above procedure. When doing so, input "0000" as the passkey.

Now when the digital pen's cap is removed, the digital pen automatically connects to the computer and the pen input standby mode is set.

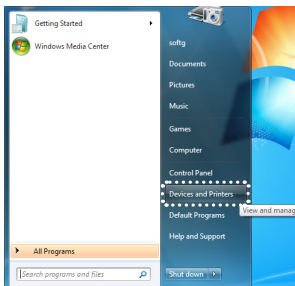
• Example of registration using a built-in Microsoft Bluetooth stack on Windows® 7

Preparations:

1. Turn on the Bluetooth function (the computer's built-in function).
2. **Take the digital pen's cap off. The power turns on and the indicator lights.**

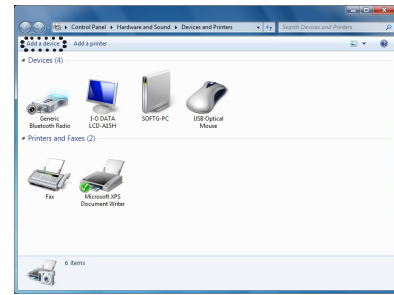
1 Click [Start] → [Devices and Printers].

The "Devices and Printers" window appears.



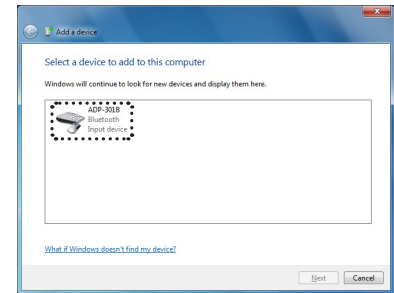
2 Click [Add a device].

The "Add a device" window appears.



3 Click "ADP-301B", then click the [Next] button.

The next window in the add wizard appears.



4 Input "0000" as the pairing code, then click the [Next] button.

The next window in the add wizard appears.



5 Click the [Close] button.



6 Put the cap on the digital pen to turn it off once.

- * To register multiple digital pens, repeat the above procedure. When doing so, input "0000" as the code.

Now when the digital pen's cap is removed, the digital pen automatically connects to the computer and the pen input standby mode is set.